

SCHNEEBERGER press release MONORAIL MR

**SCHNEEBERGER Expands MONORAIL MR Profiled Linear Guideway Series
— Moves Workpieces up to 150 tons with Extreme Accuracy in Manufacturing —**

WOBURN, MASS. December 31, 2019 — SCHNEEBERGER® Inc. has expanded its MONORAIL MR profiled linear guideway series with its new MR 30 MONORAIL 30mm rail and cross roller cartridge. The MONORAIL MR series moves especially heavy workpieces of up to 150 tons — with extreme accuracy — in milling, turning, drilling, or grinding machines.

The new MR 30, along with the entire MONORAIL MR series, delivers higher machining rates, enhanced geometrical accuracy, and improved surface quality of machined workpieces in applications ranging from industrial engine production to power plant construction to aerospace engineering to other heavy machinery construction,

The series features superior O-geometry, rather than the more-prevalent X-geometry, for extreme accuracy in positioning. Other series features include high rigidity for improved vibration control, greater dynamic and static load carrying capacity, superior rail straightness and optimized path geometries for rollers and transitions for outstanding running smoothness, and total carriage enclosure. All sizes in the series (25mm, 30mm, 35mm, 45mm, 55mm, 65mm, and 100mm) are configurable to meet the accuracy class specific to any application — from G3 (standard) to G2 and G1, as well as the highly-accurate G0.

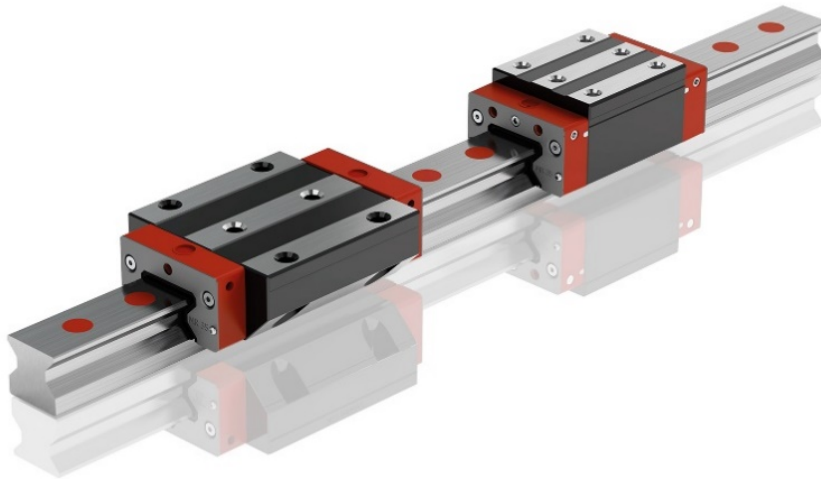
Benefits of SCHNEEBERGER's utilization of O-geometry in the MONORAIL MR series includes internal spacing of the load-carrying surfaces in conjunction with 90° offset of the roller tracks, uniform and high absorption of forces from all directions, and higher rigidity during workpiece movement.

Also, the series offers three different preload classes; special set processing through system grinding and paired rails supporting high accurate machines; carriage and rail types for attachment from above and from below; through-hardened carriages for long life; single-piece rail lengths of up to 6 m; no change of preload during assembly and operation; no loss of preload for constant machine execution; low drag wipers for protection against the environment and corrosion, with optional especially thin dense chrome-plating; a stainless steel cover-strip, various hole plug options for long lifespan of wipers; a variety of coatings for corrosion protection; and a wide scope of accessories and options. The MR 4S series offers an optimized lubrication system, ease of maintenance, shock resistant, and dirt repellent.

The new SCHNEEBERGER MR 30 MONORAIL 30mm rail and cross roller cartridge is immediately available. For more information, visit www.schneeberger.com or call 1-800-854-6333.

About SCHNEEBERGER Inc.

Founded in Switzerland in 1923, SCHNEEBERGER manufactures high precision linear guideways, including ball, needle and cross-roller bearings, miniature guideways, ball and roller Monorail guideways with integrated linear encoder options and has also become a world-class supplier of multi-axis, linear motion systems to the Semiconductor, Flat Panel, Metrology, Electronics, and Life Science industries. Vertical integration of Mineral cast technology, providing superior damping characteristics compared to traditional granite base and gantry structures, has enabled SCHNEEBERGER to produce platforms that meet customer performance specifications that were previously unachievable. www.schneeberger.com



SCHNEEBERGER® Inc. expands its MONORAIL MR profiled linear guideway series with its new MR 30 MONORAIL 30mm rail and cross roller cartridge. The series moves especially heavy workpieces of up to 150 tons — with extreme accuracy — in milling, turning, drilling, or grinding machines.

Order SCHNEEBERGER product images by email or simply call us.